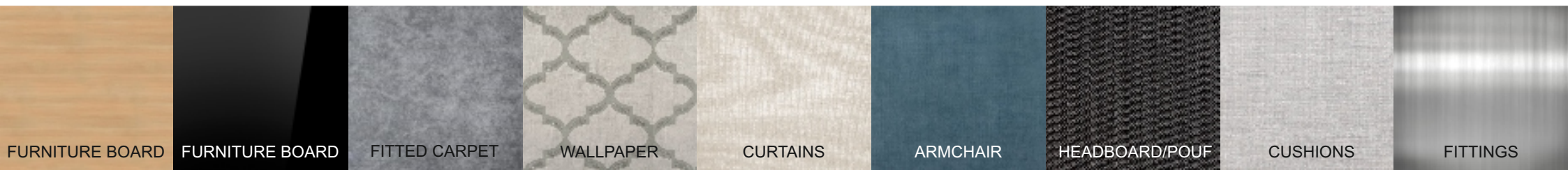
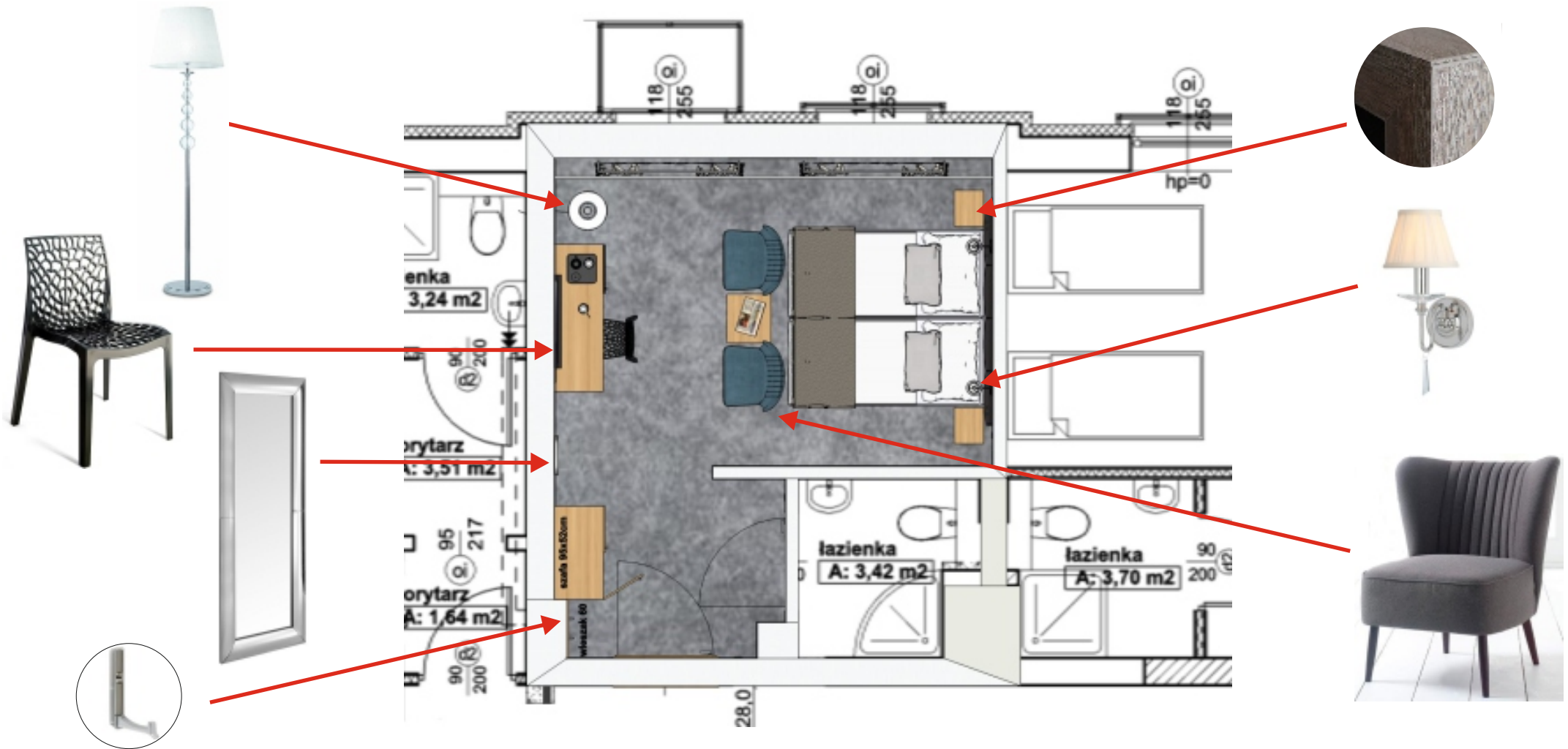


# EXAMPLE PROJECT \*

\* PERFORMED DURING PHASE 2 (PROJECT) DESCRIBED IN THE DOCUMENT: FABER INTERIORS - INVESTMENT PROCESS



# PRESENTATION OF PROPOSED FURNITURE, COLOURS AND MATERIALS





## WORKING 3D PRESENTATION



## 3D VISUALIZATION OF THE INTERIOR





## PHOTOREALISTIC 3D VISUALIZATION OF THE INTERIOR

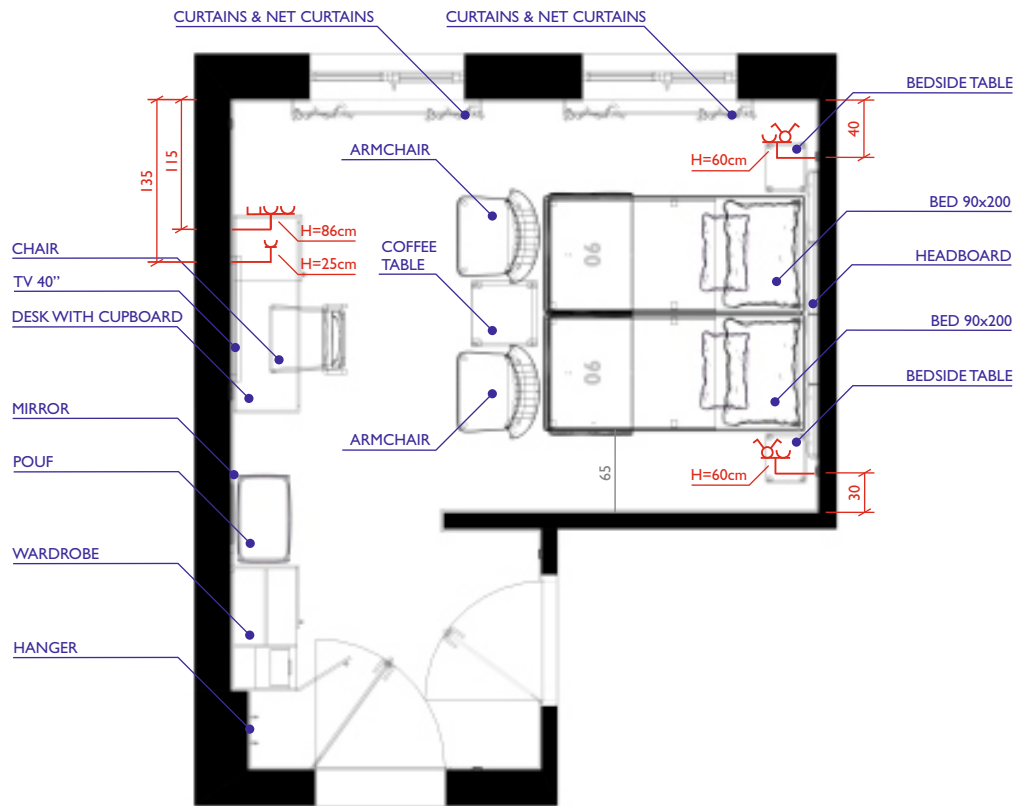


# FUNCTIONAL ARRANGEMENT OF FURNITURE ON THE FLOOR PLAN





# SUPPORT SCHEME WITH GUIDELINES FOR WIRING






All symbols determine the middle of the socket/frame. The height H indicates a dimension between the axis of the socket/frame and finished floor. Horizontal dimensions are being counted from walls to the axis of the socket/frame.

The walls/parts of wall occupied in the picture by furniture (wardrobe, headboard, desk, hanger, mirror etc.) should be deprived of all sockets/switches/electrical outputs other than the electric points/equipment indicated on the attached drawing.

Attention: The electric points shown on the layout are not all the electric equipment necessary in the hotel room. All other electric installation is determined by the client. The marked points are the outlets that are required for proper installation of the assortment provided by Faber Interiors company.

## LEGEND:

-  Double horizontal frame:
  - bipolar switch
  - single socket
-  Triple horizontal frame:
  - Telecom socket (internet + telephone)
  - double socket
-  Single socket (power supply for minibar)


Note - Drawings cannot be treated as trade electric project. They are rather demonstrative and subsidiary.

The way of drawing up the projects can differ depending on characteristics and individual features of the facility. For example we mark the dimensions of problematic areas in small rooms or we show standing human figures in 3D presentations of the rooms with height diversification (like low substrings or sloping walls).

The level of details and rendering quality depends on the Client's needs, the type of investment and the complexity of the order. In case of the delivery of furniture along with additional accessories and textile decorations (bedspreads, curtains, cushions), the Investor can request for a 3D photorealistic visualization in the quality allowing to place them on a website or in publicity materials.

# CONTACT

[www.faberinteriors.pl](http://www.faberinteriors.pl)

 +48 91 487 59 45

 [biuro@faberinteriors.pl](mailto:biuro@faberinteriors.pl)

**Katarzyna Uszek**

Architect

Contact in English



+48 608019101



[katarzyna@faberinteriors.pl](mailto:katarzyna@faberinteriors.pl)

**Joanna Zabłocka**

Architect

Contact in English



+48 534265007



[joanna@faberinteriors.pl](mailto:joanna@faberinteriors.pl)

## Headquarters

ul. Łukasieńskiego 110

71-215 Szczecin

POLSKA



+48 608476544



[info@faberinteriors.pl](mailto:info@faberinteriors.pl)



Faber Interiors Szymon Sargalski, ul. Łukasieńskiego 110, 71-215 Szczecin, Poland  
NIP 852 267 25 24, REGON 388956545

All rights reserved

All text, drawings, photos and other information published in this presentation are copyrighted by Faber Interiors. Any copying, distribution, electronic processing and retransmission of content is strictly prohibited without prior written permission.